

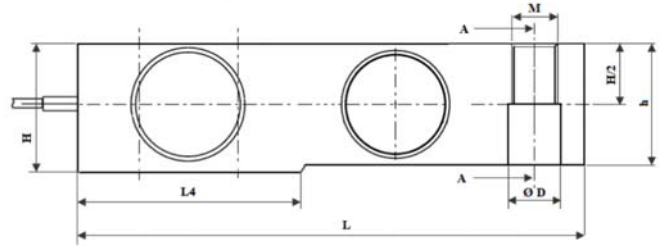
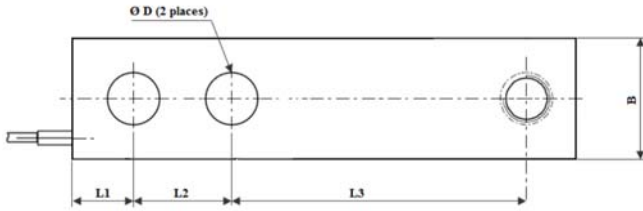
# HL-BM8D

## PASLANMAZ ÇELİK LAMA TİPİ YÜK HÜCRESİ



IP68 çok yüksek su koruma sınıfı

Paslanmaz çelik



Dimension Capacity	L	L1	L2	L3	L4	B	H	h	ØD	Ø D1	Ø d1	Ø d2	H2	H3	H4	M
0.15t - 0.3t	130	15.7	25.4	76.2	57.1	31.3	31.3	-	13.5	18	4	2	14.5	15.8	4.8	M12
0.5t	130	15.7	25.4	76.2	57.1	31.3	31.3	24.8	13.5	18	4	2	14.5	15.8	4.8	M12
1t	130	15.7	25.4	76.2	57.1	31.3	31.3	26.0	13.5	18	4	2	14.5	15.8	4.8	M12
1.5t - 2t	130	15.7	25.4	76.2	57.1	31.3	31.3	28.0	13.5	18	4	2	14.5	15.8	4.8	M12
2.5t - 5t	171	19	38.1	95.2	76.2	36.8	36.8	34.8	20.5	25	4	2	17.5	18.8	4.8	M20
7.5t - 10t	222	25.4	50.8	120.7	101.6	49.5	49.5	47.5	26.9	-	-	-	-	-	-	M24

### Teknik Özellikler

- Class : C3
- Temp. effect on span (% F.S/10°C):  $\pm 0.017\%$  &  $\pm 0.011\%$
- Comprehensive error (% F.S) :  $\pm 0.03\%$  &  $\pm 0.02\%$
- Temp. effect on zero (% F.S/10°C):  $\pm 0.023\%$  &  $\pm 0.015\%$
- Rated output(mv/v) :  $3.0 \pm 0.003$
- Compensated temp. range (°C) :  $-10 \text{ }^{\circ}\text{C} \text{ } +40$
- Creep (%F.S/30min) :  $\pm 0.024\%$  &  $\pm 0.016\%$
- Use temp. range (°C) :  $-20 \text{ }^{\circ}\text{C} \text{ } +55$
- Zero balance (% F.S) :  $\pm 1.0$
- Excitation voltage (V) :  $9 \text{ }^{\circ} 12(\text{DC})$
- Input resistance ( $\Omega$ ) :  $350 \pm 5$
- Safe overload (% F.S) : 150
- Output resistance ( $\Omega$ ) :  $350 \pm 3$
- Ultimate overload (% F.S) : 200
- Insulation resistance (M $\Omega$ ) :  $\geq 5000(100\text{VDC})$
- Defend grade : IP66

### KAPASİTE

C-3	0.5 t - 1 t - 1.5 t - 2 t
	2.5 t - 5 t
	7.5 t - 10 t

