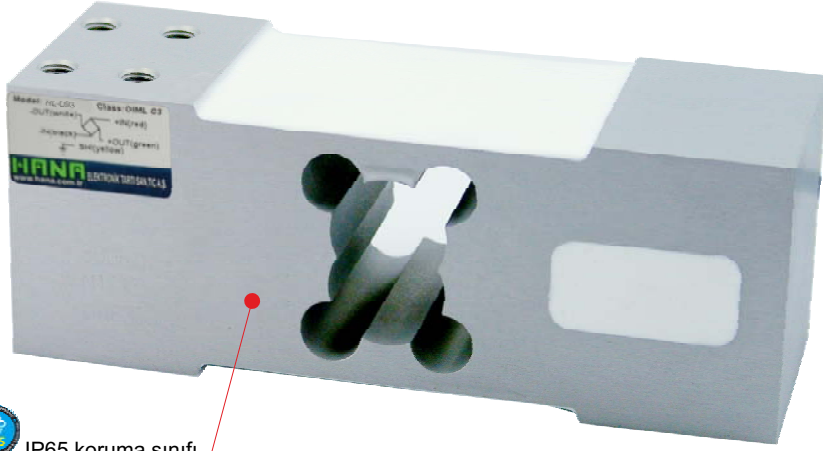
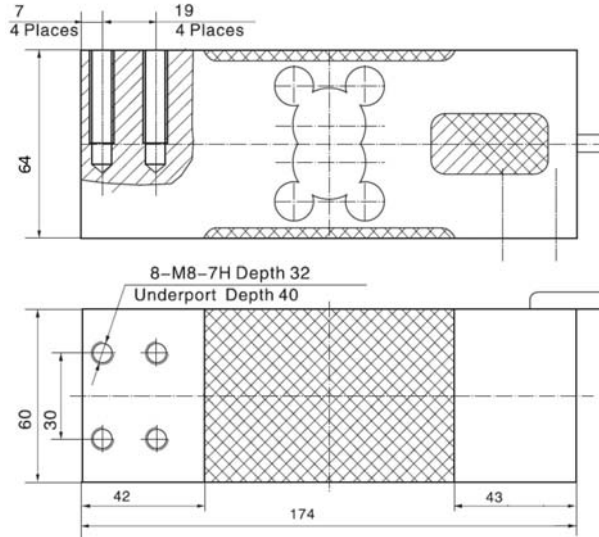


HANA LOAD-CELL HL-L6G



IP65 koruma sınıfı



- Class: C3
- Temp. effect on span (% F.S/10°C): $\pm 0.02/\pm 0.014$
- Comprehensive error (% F.S) : $\pm 0.02/\pm 0.017$
- Temp. effect on zero (% F.S/10°C) : $\pm 0.03/\pm 0.017$
- Rated output (mv/v) : 2.0 ± 0.2
- Compensated temp. range (°C) : -10 ~ +40
- Creep (% F.S/30 min) : $\pm 0.02/\pm 0.017$
- Use temp. range (°C) : -20 ~ +60
- Zero balance (% F.S) : ± 2.0
- Excitation voltage (V) : 9 ~ 12(DC)
- Input resistance (Ω) : 405 ± 10
- Safe overload (% F.S) : 120
- Output resistance (Ω) : 350 ± 3
- Ultimate overload (% F.S) : 150
- Insulation resistance (M Ω) : ≥ 5000 (100VDC)

KAPASİTELER (Kg)

KAPASİTELER (Kg)	
C-3	100 kg
	150 kg
	200 kg
	250 kg
	300 kg
	350 kg
	400 kg
	500 kg
	800 kg